

Rural Development Program 2007 – 2013

Austria

Klaus Wagner

Federal Institute of Agricultural Economics
Marxergasse 2, 1030 Vienna
+43 1 8773651 7428
Klaus.wagner@awi.bmlfuw.gv.at

Content:

1. CAP steps
2. Rural development 2007 – 2013 Austria
 - 2.1 Programming
 - 2.2 Measures
 - 2.3 Evaluations
3. Conclusions

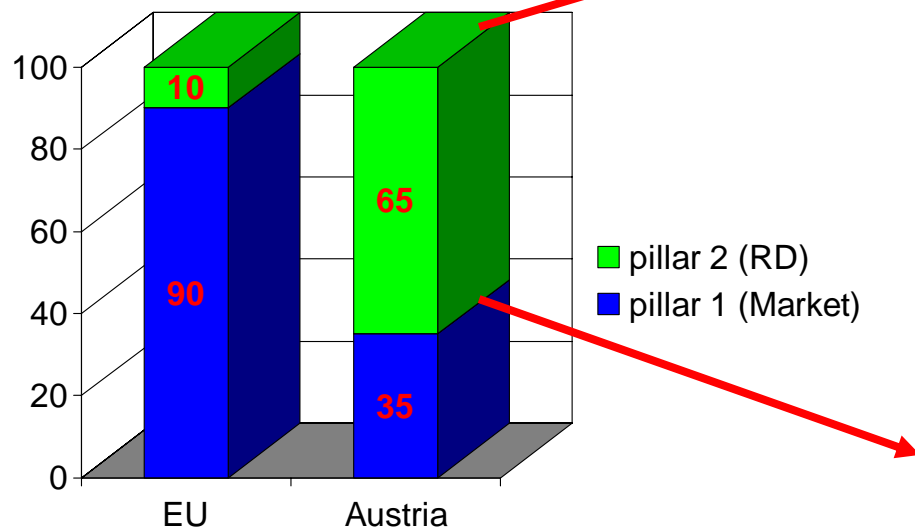


- 1960's: Treaty of Rome: productivity, food security, stable supply
- 1992: reforms to reduce support prices, shift to direct payments, more market orientation
- Agenda 2000: second pillar, rural development introduced (30 Million €)
- 2003: further reform to strengthen rural development, market orientation, direct payments, cross compliance, food quality, animal welfare (77 million € for rural development until 2013)
- After 2013: Conflict area food quality, quantity again – energy – environmental issues – social issues of agricultural activities

- Long tradition to cope with difficult natural and structural conditions, situation 2000 – 2006:

Agricultural Policy in general

10.6 Billion €



Rural development:

6.9 Billion €

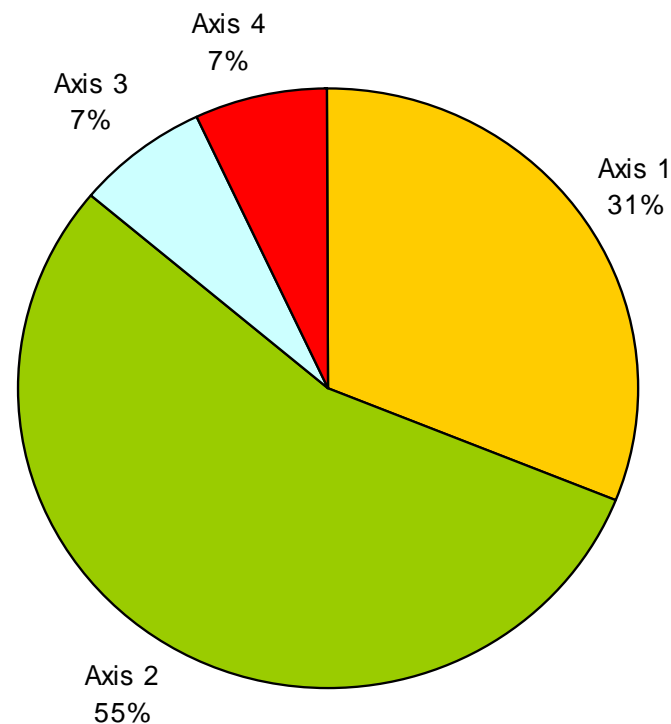
- 61% Environment
- 29% Less Favoured Areas
- 4% Investments
- 3% Adaptation
- 2% Forestry
- 2% Installation of young farmers
- 1% Vocational Training

3 step planning:

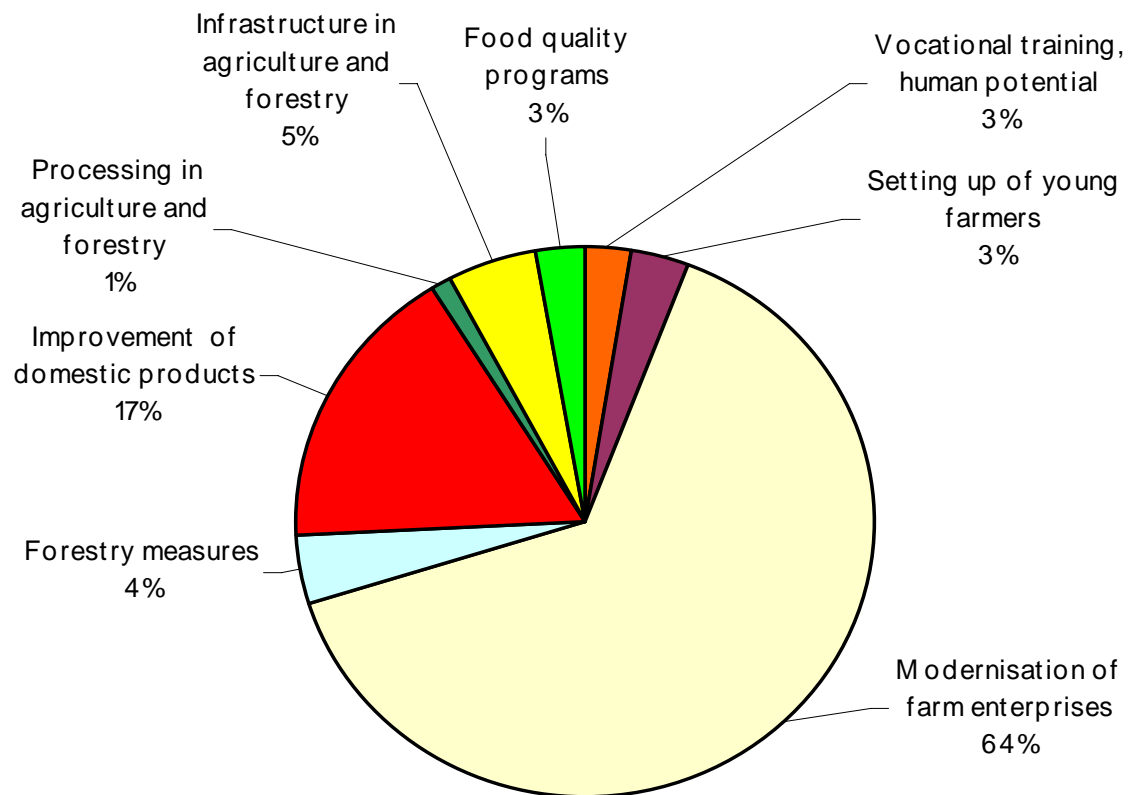
- Start in 2005, broad participation, working groups , different stakeholders
- Spring 2006: first draft, public discussion also in internet
- Dec 2006: Submission to EU Commission
- Jan. 2007 in force, finally approved by EU Sept. 2007

3 Axes:

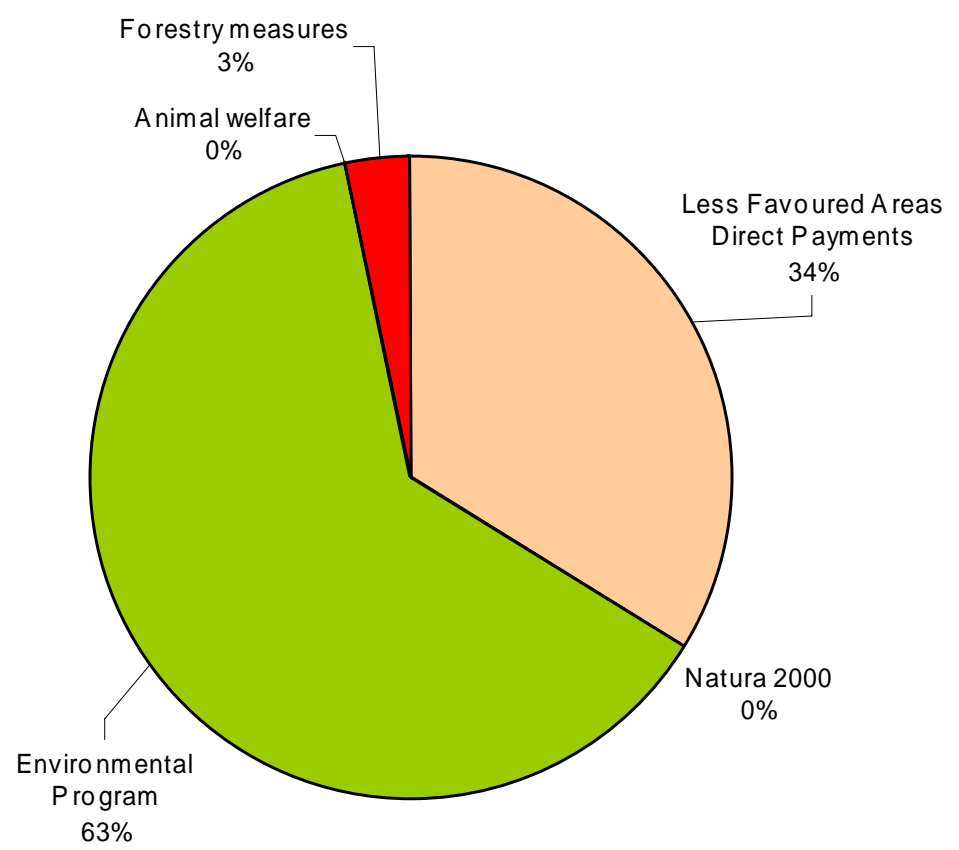
- 1: Competitiveness (agriculture, €3,3 billion)
- 2: Environment, landscape (€5,8 billion)
- 3: Rural regions (agriculture and other sectors, €0,8 billion)
- 4: Leader (€0,7 billion)



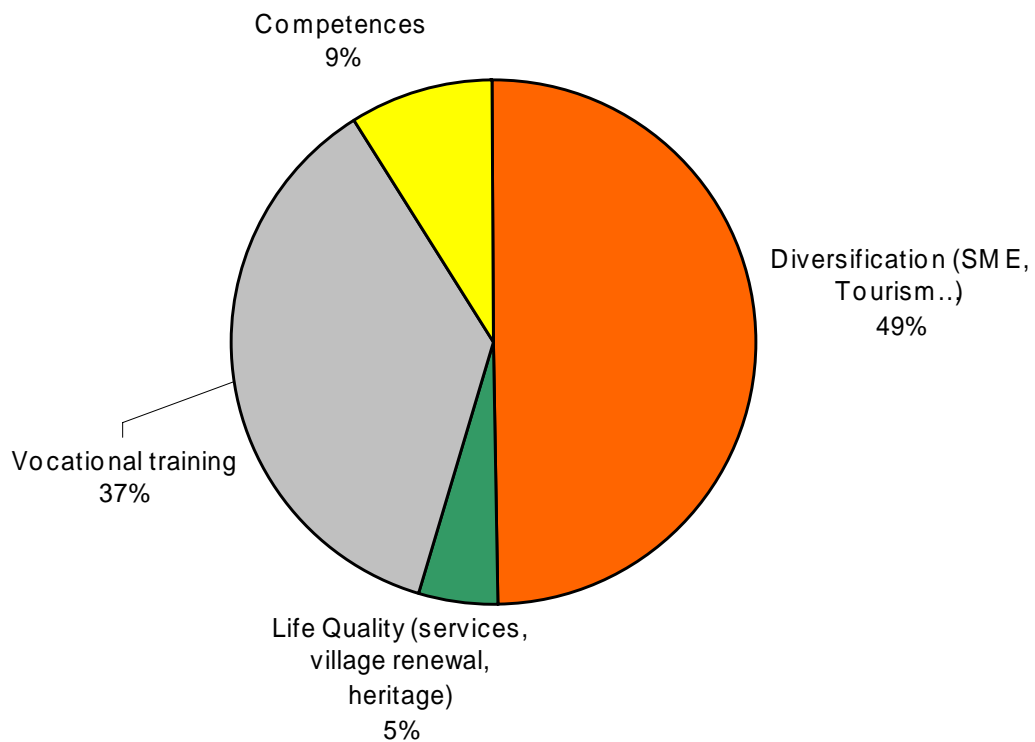
Axis 1:



Axis 2:



Axis 3:



2004:

Rural Development in all:

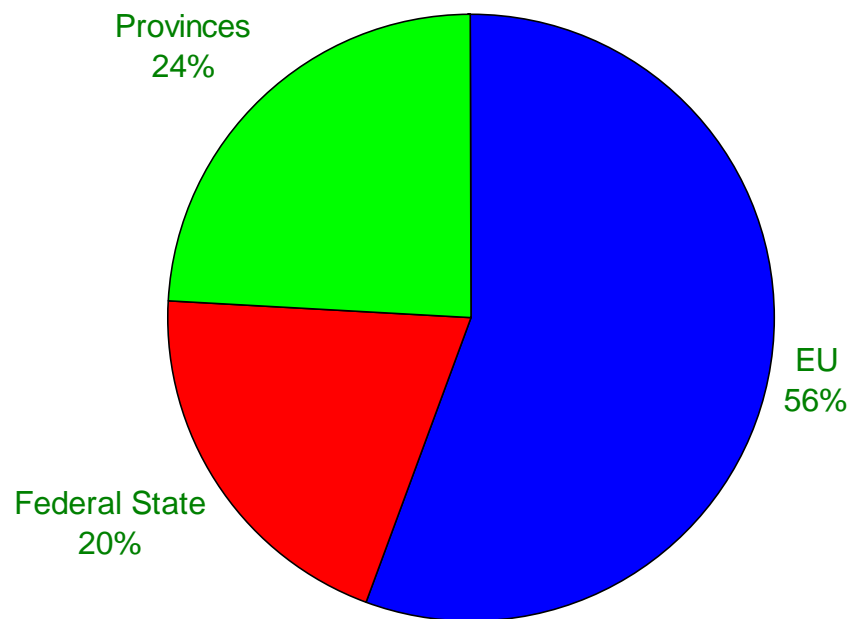
2,212,- Mill. €

190,000 holdings

7.4 Million ha

= 11,600,- € per holding

= 298,- € per ha



2004

Environmental Program in all:

134,000 holdings (75%)

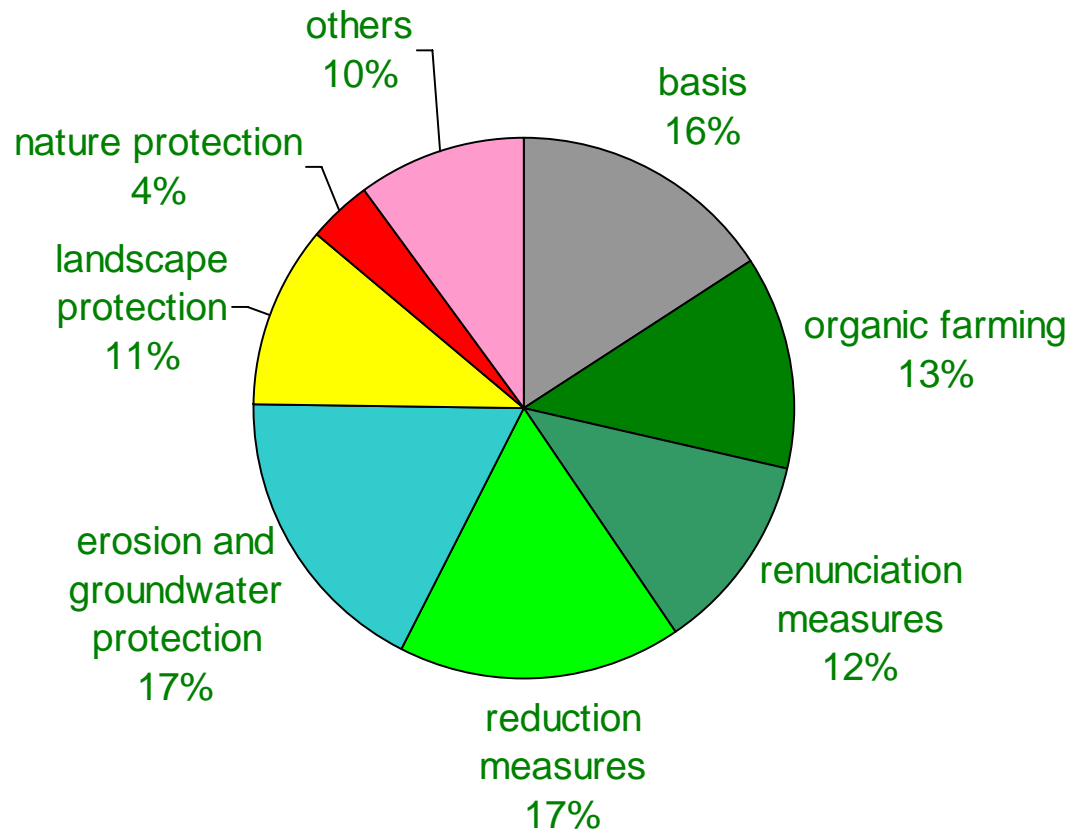
2.3 Million ha (89%)

640 Million €

= 4,800 € per holding

= 280 € per ha

Budget by measures



2004

Less Favoured Areas in all:

113,000 holdings (66%)

1.6 Million ha (62%)

280 Million €

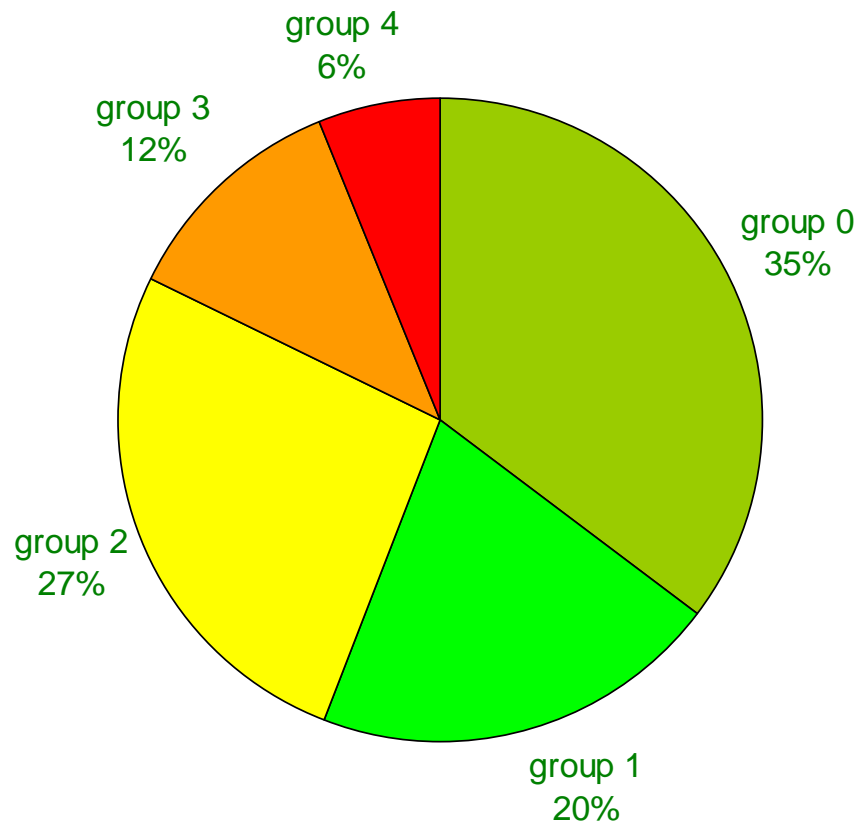
= 2,500 € per holding

= 175 € per ha

(differing very much by the classification in the mountain farmers register,

group 0: 979,- €, group 4: 5,172,- €)

Holdings in disadvantage groups



Budget (1):

- **EU + Federal State + Provinces**

(market support, cereals, suckler cows, 240 mill. €, structural measures, environmental measures, 1,300 mill. €)

- **EU + Federal State**

(storing of cereals, milk, meat, 2 mill. €)

- **EU + Provinces**

(special measures of the environmental program)

- **EU**

(processing + marketing of milk, wine, sugar, starch, 54 mill €, restructuring of vineyards, 8 mill. €)

Budget (2):

- **Federal State + Provinces**

(energy of biomass 14 mill. €, infrastructure, innovation, investments, machinery rings, ...)

- **Provinces**

(special water management measures, land consolidation measures, special alpine farming, 6 mill. €)

- **Communities** (special smaller amounts e.g. tourism related payments)