

2nd Evaluation Steering Group Meeting EU Twinning project KS

Author:
Karl Ortner (AT),
Evaluation team

Twinning Project of Kosovo,
Prishtina, 19.04.2012




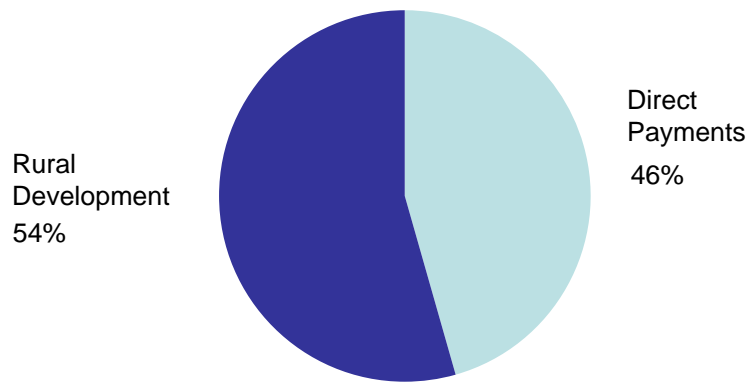
PHOTO BY MARIKA DORE

MTE Inception Presentation

- ARDP Payments**
- Evaluation criteria**
- Indicators**
- Evaluation questions**
- Methodology - effects**
- Data collection**
- Structure of MTE report**
- Organisation**

Direct payments and Rural Development

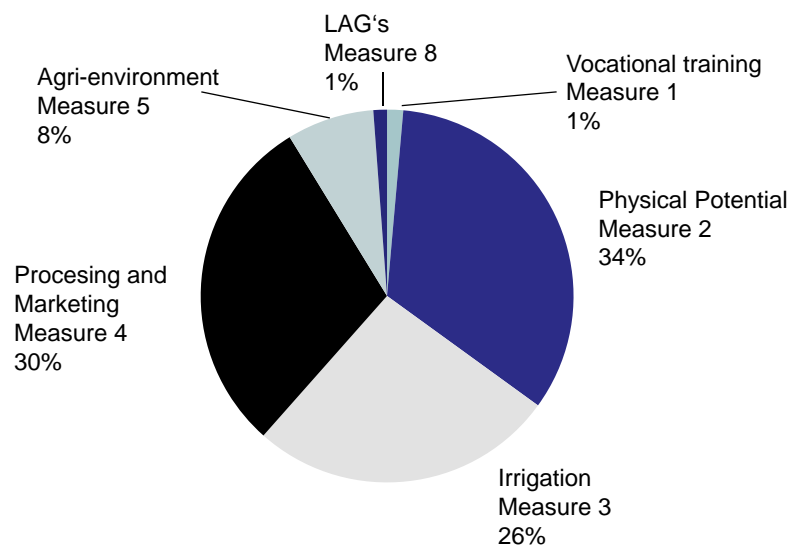
31,18 Mio. € from 2007-2011



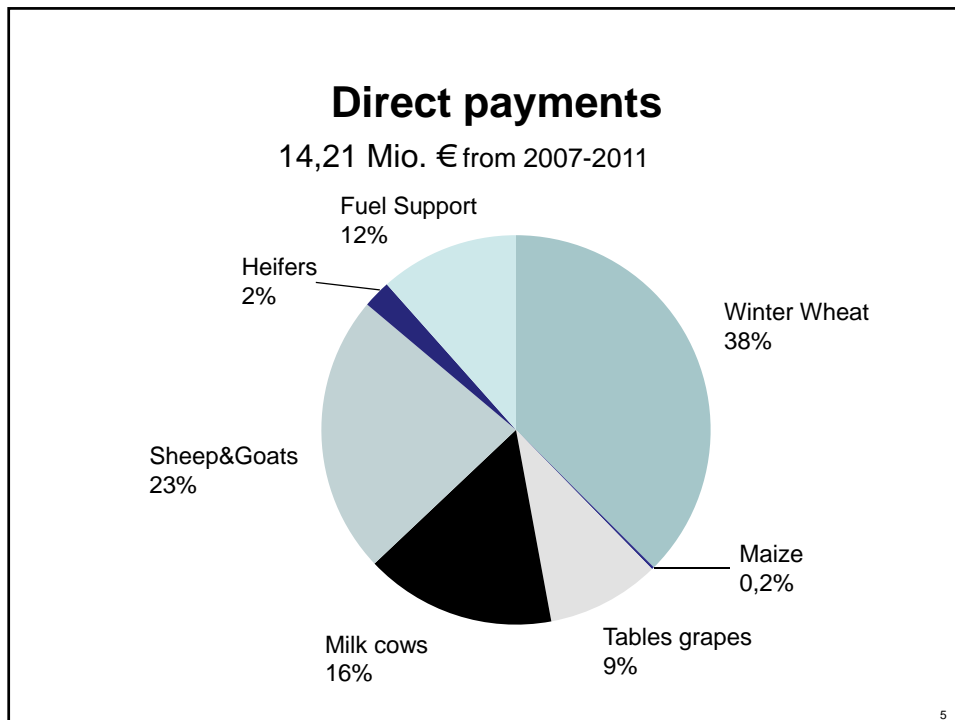
3

Rural Development

16,97 Mio. € from 2007-2011



4



Main Evaluation Criteria

Relevance

The extent to which an intervention's objectives are pertinent to needs, problems and issues;

Effectiveness

The extent to which objectives pursued by an intervention are achieved;

Efficiency

Best relationship between resources employed and results achieved in pursuing given objectives through an intervention;

Indicators

baseline

situation at the outset of the programme or measure (starting point) and its evolution over time in quantitative terms

input

public support payments

outputs

immediate outputs of a measure, i. e. the number of farms, beneficiaries, hectares, livestock units, projects etc. supported

results

changes which occurred or can be expected to occur at the level of the beneficiaries

gross effects

contribution of the measure to these changes

impacts

on rural areas and the wider economy (net effects)

Karl Ortner, MTE ARDP Kosovo, 19.4.2012

7

Baseline indicators related to objectives

AXIS		Indicator
Horizontal	(*) 1	Economic development
	(*) 2	Employment rate
	(*) 3	Unemployment
AXIS 1, Improving the competitiveness of the agricultural and forestry sector	(*) 4	Training and education in agriculture
	5	Age structure in agriculture
	(*) 6	Labour productivity in agriculture
	7	Gross fixed capital formation in agriculture
	8	Employment development of primary sector
	9	Economic development of primary sector
	(*) 10	Labour productivity in food industry
	11	Gross fixed capital formation in food industry
	12	Employment development in food industry
	13	Economic development of food industry

EU Reg. 1974/2006, MTE ARDP Kosovo, 19.4.2012

8

Common Impact Indicators

IV. COMMON IMPACT INDICATORS

	Indicator
1	Economic growth
2	Employment creation
3	Labour productivity
4	Reversing biodiversity decline
5	Maintenance of high nature value farmland and forestry
6	Improvement in water quality
7	Contribution to combating climate change

EU Reg. 1974/2006, MTE ARDP Kosovo, 19.4.2012

9

Evaluation questions (example)

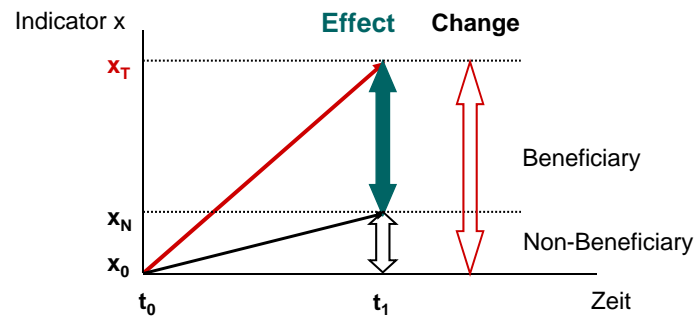
Measure	Investments in agricultural holdings to restructure and to upgrade to Community standards
Measure Code	101
Evaluation questions	<p>To what extent have the supported investments contributed to improve the income of agricultural holdings? Income, competitiveness</p> <p>To what extent have the supported investments contributed to improving the competitiveness of the agricultural sector?</p> <p>To what extent have the supported investments contributed to a better use of production factors on holdings? Production factors</p> <p>To what extent have the supported investments improved the quality of farm products in compliance with EU standards? Product quality</p> <p>To what extent have the supported investments improved production conditions in terms of better working conditions in compliance with EU standards? Working conditions</p> <p>To what extent have the supported investments improved production conditions in terms of animal welfare in compliance with EU standards? EU Standards</p> <p>To what extent have the supported investments facilitated environmentally friendly production? Environment friendly</p>

Karl Ortner, MTE ARDP Kosovo, 19.4.2012

10

Methodology

$$\text{Effect} = (x_T - x_0) - (x_N - x_0) = (x_T - x_N)$$



Karl Ortner, BA für Agrarwirtschaft, Wien, 20.5.2011

11

Primary data collection

Stakeholder group discussions

ministries, municipalities, schools, NGOs, donor organizations
(rural areas, ARDP)

Interviews of implementing personnel

MAFRD, Municipal Offices, Regional Offices
(programming, management, applications, selection, ...)

Interviews of beneficiaries

project representatives
(measures 4, 5 and 8)

Questionnaires (via interviews)

beneficiaries and non-beneficiaries
(measure 2, direct payments)

Karl Ortner, MTE ARDP Kosovo, 19.4.2012

12

Sampling

Select one municipality per region (at random)
 Select another municipality (at random)
 until
 for each of 4 (major) **RD** measures
 at least 20 applicants who were rejected have been selected
 at least 20 applicants who were accepted have been selected

In the selected municipalities
 visit 20 applicants who were rejected
 visit 20 applicants who were accepted
 ~ 160 questionnaires

Check how many of them got direct payments

Repeat the procedure for each of 4 direct payments until
 for every DP measure there are 20 rejected and 20 accepted applicants

Karl Ortner, MTE ARDP Kosovo, 19.4.2012

13

Secondary data

Reports and documents

ARDP
 Implementation provisions
 Implementation reports
 Gap analysis report of previous Twinning project

ARDP monitoring tables

ARDP applications and payments (DP, M2)

FADN report

Statistics

Agricultural Household Surveys
 Foreign Trade

.....

Karl Ortner, MTE ARDP Kosovo, 19.4.2012

14

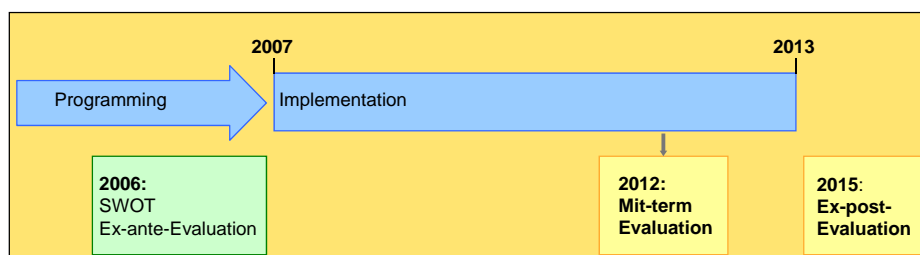
Structure of report

- 1 SWOT analysis and **needs** if available
- 2 **Baseline** situation and recent developments (context)
- 3 **Objectives**, targets and achievements (table)
- 4 **Measure** design
- 5 **Implementation**
- 6 Allocation of **funds**, delivery, absorption, inputs and outputs
- 7 Intervention logic, data and **indicators**
- 8 Assessment of **effects**
- 9 Answers to **evaluation questions**
- 10 **Recommendations**

Karl Ortner, MTE ARDP Kosovo, 19.4.2012

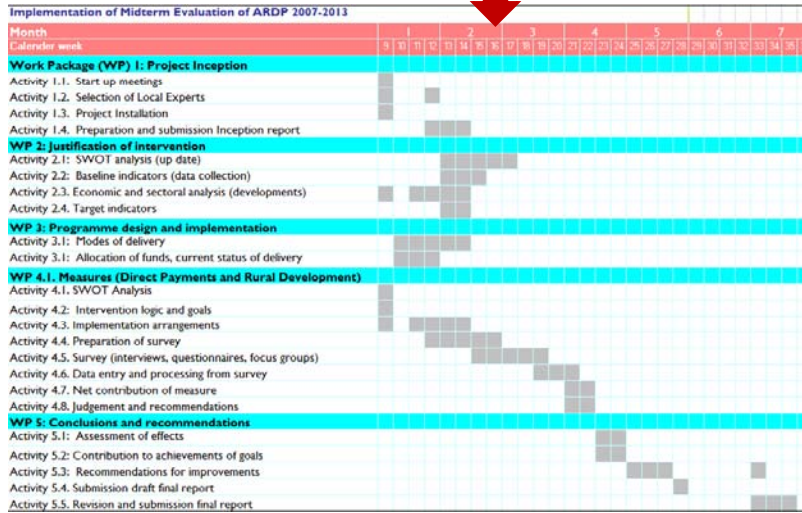
15

Timetable Evaluation - Kosovo



Work plan

Start: 27.2.2012



17

Resources for MTE

Federal Institute of Agricultural Economics

Karl M. Ortner, team leader

Hubert Janetschek

Karl Heinz Pistrich

Christoph Tribl

Kastner International

Robert Kastner

Local experts

Muja Gjonbalaj, Local Senior Expert

5 Local Junior Experts

Twining Project Act. 1.2

Michaela Pichler

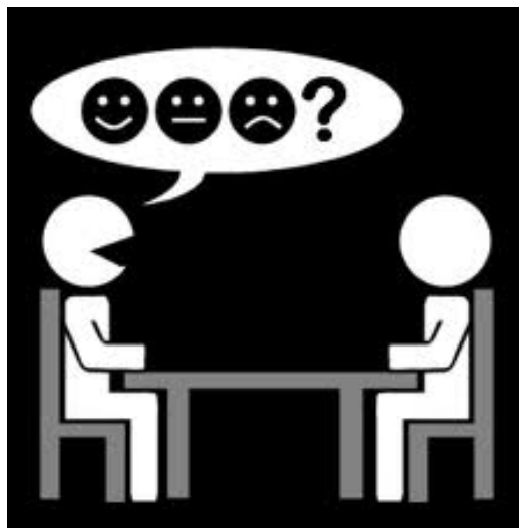
Senior Experts

Achievements of Evaluation

- Identification and appraisal of **needs** for support
- Assessment of strategic orientation of policies and programme
- **Assessment** of quality, effectiveness and efficiency of measures and ARDP overall
- Support for programming and targeting
- Compliance with legal requirements and guidelines
- **Accountancy** of public money

19

Time for discussion



20